



# TLE2 Polyclonal Antibody

<b>Catalog No</b>	YP-Ab-02121
<b>Isotype</b>	IgG
<b>Reactivity</b>	Human;Rat;Mouse;
<b>Applications</b>	WB;IHC;IF;ELISA
<b>Gene Name</b>	TLE2
<b>Protein Name</b>	Transducin-like enhancer protein 2
<b>Immunogen</b>	The antiserum was produced against synthesized peptide derived from human TLE2. AA range:211-260
<b>Specificity</b>	TLE2 Polyclonal Antibody detects endogenous levels of TLE2 protein.
<b>Formulation</b>	Liquid in PBS containing 50% glycerol, 0.5% BSA and 0.02% sodium azide.
<b>Source</b>	Polyclonal, Rabbit,IgG
<b>Purification</b>	The antibody was affinity-purified from rabbit antiserum by affinity-chromatography using epitope-specific immunogen.
<b>Dilution</b>	WB: 1/500 - 1/2000. IHC: 1/100 - 1/300. ELISA: 1/20000.. IF 1:50-200
<b>Concentration</b>	1 mg/ml
<b>Purity</b>	≥90%
<b>Storage Stability</b>	-20°C/1 year
<b>Synonyms</b>	TLE2; Transducin-like enhancer protein 2; Enhancer of split groucho-like protein 2; ESG2
<b>Observed Band</b>	110kD
<b>Cell Pathway</b>	Nucleus.
<b>Tissue Specificity</b>	In all tissues examined, mostly in heart, brain, and muscle.
<b>Function</b>	function:Transcriptional corepressor that binds to a number of transcription factors. Inhibits the transcriptional activation mediated by CTNNB1 and TCF family members in Wnt signaling. The effects of full-length TLE family members may be modulated by association with dominant-negative AES.,similarity:Belongs to the WD repeat Groucho/TLE family.,similarity:Contains 6 WD repeats.,subunit:Homooligomer and heterooligomer with other family members. Binds LEF1, TCF7, TCF7L1, TCF7L2, UTY, HES1 and HES5.,tissue specificity:In all tissues examined, mostly in heart, brain, and muscle.,
<b>Background</b>	function:Transcriptional corepressor that binds to a number of transcription factors. Inhibits the transcriptional activation mediated by CTNNB1 and TCF family members in Wnt signaling. The effects of full-length TLE family members may be modulated by association with dominant-negative AES.,similarity:Belongs to the WD repeat Groucho/TLE family.,similarity:Contains 6 WD repeats.,subunit:Homooligomer and heterooligomer with other family members.



Binds LEF1, TCF7, TCF7L1, TCF7L2, UTY, HES1 and HES5.,tissue specificity:In all tissues examined, mostly in heart, brain, and muscle.,

**matters needing attention**

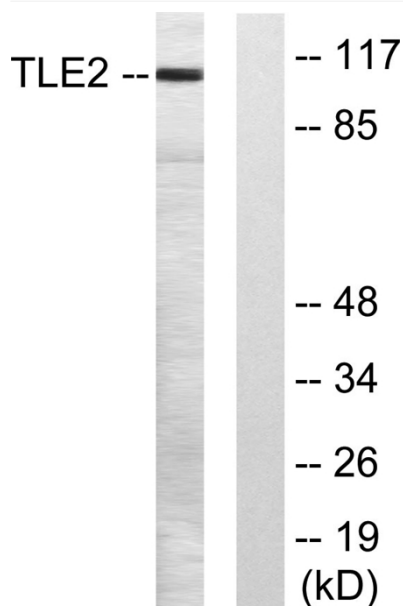
Avoid repeated freezing and thawing!

**Usage suggestions**

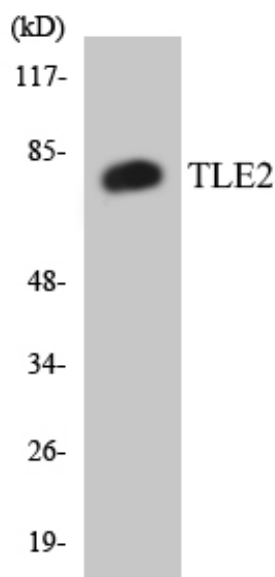
This product can be used in immunological reaction related experiments. For more information, please consult technical personnel.



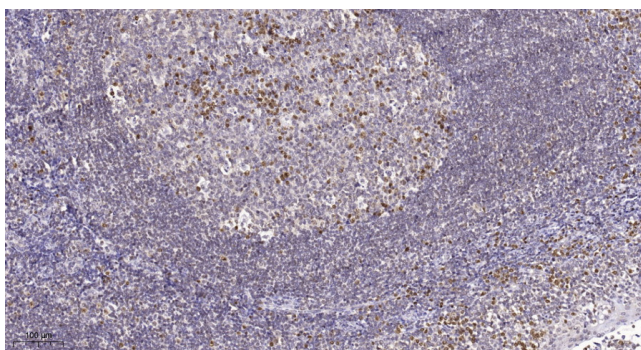
## Products Images



Western blot analysis of lysates from LOVO cells, using TLE2 Antibody. The lane on the right is blocked with the synthesized peptide.



Western blot analysis of the lysates from HT-29 cells using TLE2 antibody.



Immunohistochemical analysis of paraffin-embedded human tonsil. 1, Tris-EDTA, pH 9.0 was used for antigen retrieval. 2 Antibody was diluted at 1:200 (4° overnight). 3, Secondary antibody was diluted at 1:200 (room temperature, 45 min).